



***Eagle New Energy Technology co., ltd*** ,is the clear leader in high output, high efficiency LED lights for harsh environments ,Our expertise includes explosion-proof and hazardous location lighting as well as for permanent and portable applications such as marine and industrial applications.

*After several years efforts ,In a saturated market of mundane LED lighting products, one of MP Eagle's key differentiators is our partner from USA DuraBrite– an MIT doctorate recipient and avid inventor . His vision drives our focus on engineering and pursuit of innovation.*

*Our products' brightness and long term reliability survive the harshest slements on the earth. They are being used by manufacturing facilities, refineries, military bases, aerospace facilities and paint spray booths.*

*Below is a shortlist of our best-selling products:*

*Explosion proof lights*

*Corrosion resistant luminaries (for marine use)*

*Emergency lights*

*Hunting and fishing lights*

*Construction, trucking and mining lights*

*High powered stadium lights*

*Driven by the continuous decline in global prices and the continuous improvement of quality, we will continue to provide our brand supporters with both high optical output and low energy consumption the most cost-effective products.*



### MP EAGLE Nano Sport Series

MP Eagle & DuraBrite fans have been asking for a model that's even smaller and more affordable than the Mini for the utmost versatility and mobility. We take this seriously and the result is the magnificent Nano !

Nano Sport is designed by the same world-class team in New York using the best engineering principles, and spec-ing only the finest materials in its class.

Don't be fooled by its extremely thin profile at just 1.9" and a featherlike weight of merely 2.1lb, the Nano can pump

almost 7,000 lumens all while drawing such little current it leaves the competition scratching their heads. The standard dimming function and the spot/flood available option will allow you to optimize the exact amount of light to get the job done right.

Departing from our traditional hard-wiring architecture, the Nano Sport comes with a detachable IP67 waterproof plug that allows the user to remove the light and eliminate theft of this highly desirable product.

The Nano Sport comes with a standard 2 year warranty with extended warranty available for purchase. Get your Nano and join the growing MP Eagle family. We guarantee you will love it !



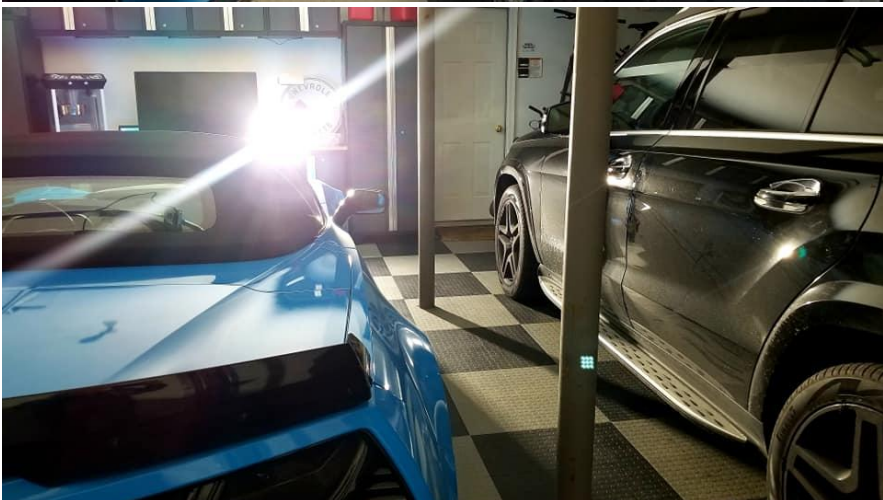
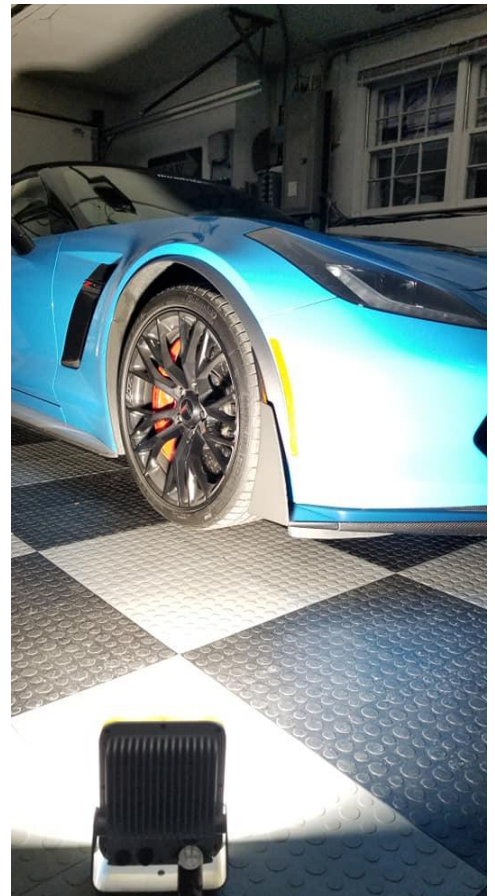
#### NANO SPORT AT A GLANCE

- 7,000 raw lumens (approx.)
- Spot at 20 deg beam angle
- Flood at 80 deg beam angle
- 12VDC and 24VDC auto detect
- 4.5A at 12V and 2.3A at 24V
- 5000K cool white optics
- Marine grade aluminum bracket included
- IP67 Certified
- Dimensions: 6.0" x 5.5" x 1.9"
- Weight: 2.1lb
- Black or White exterior
- Designed in U.S.A.
- 2 Year Limited Warranty





**EAGLE**  
DESIGNED BY DURABRITE



MP *Mini Eagle Series* is designed for use by serious recreational users and at a price point you will find hard to refuse.



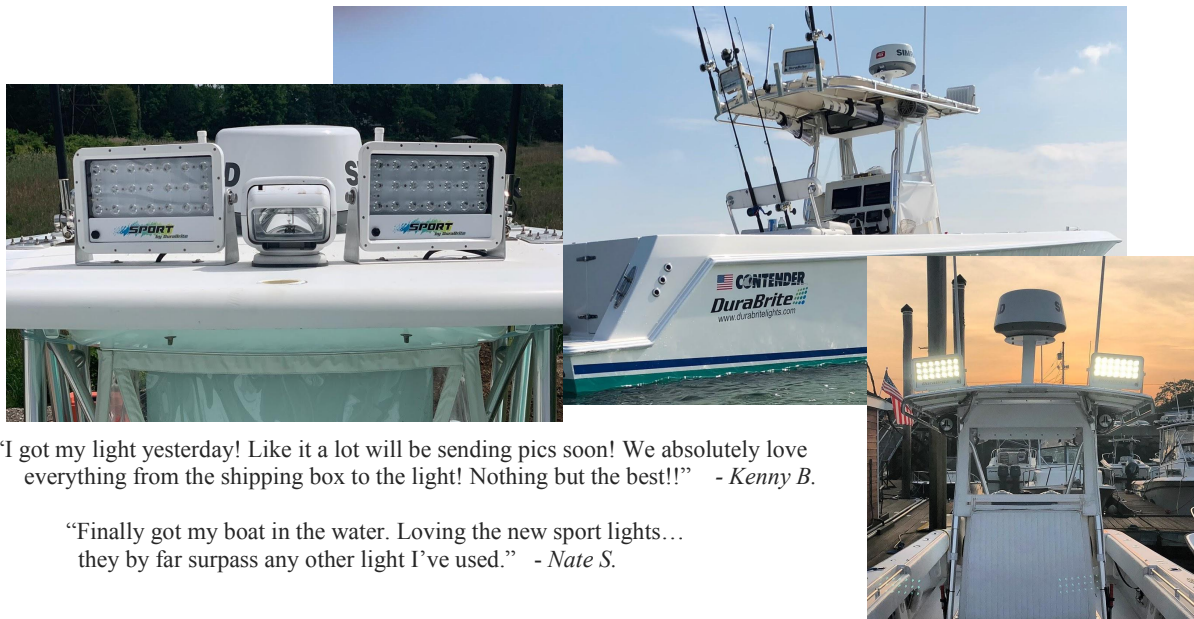
Like the Original Mini, which has been the preferred choice for hardcore professionals such as celebrity and commercial fishermen as well as NYPD and SWAT officers, the *Mini Eagle* gives a massive amount of light in a small and lightweight package.

As the best-in-class commercial grade luminaire, the *Mini Eagle* is designed in New York and we spec to use only the finest materials and best commercial manufacturing practices to produce.

You will find that it's the perfect choice for your 16-foot bowrider, your smooth cruising pontoon, or your high performance 23-foot center console. It will make you want to spend more time out in the waters, and will give you the peace of mind you can return to shore safely after dark. For those who are getting a pre-owned boat, the *Mini Eagle* will be an affordable yet significant upgrade to set yours apart.

Beach party goes and event planners can use the *Mini Eagle*, with the optional tripod mount and available color filters, to set up scene lighting for those night parties you've always wanted to throw.

Many also find it useful to light up their entire backyard for increased safety to keep intruders out while the raccoons finally have no place to hide!



“I got my light yesterday! Like it a lot will be sending pics soon! We absolutely love everything from the shipping box to the light! Nothing but the best!!” - *Kenny B.*

“Finally got my boat in the water. Loving the new sport lights... they by far surpass any other light I've used.” - *Nate S.*



**MPS16500D1SX REV. -**

**Wiring Instruction:**

If you have a DC Power Source

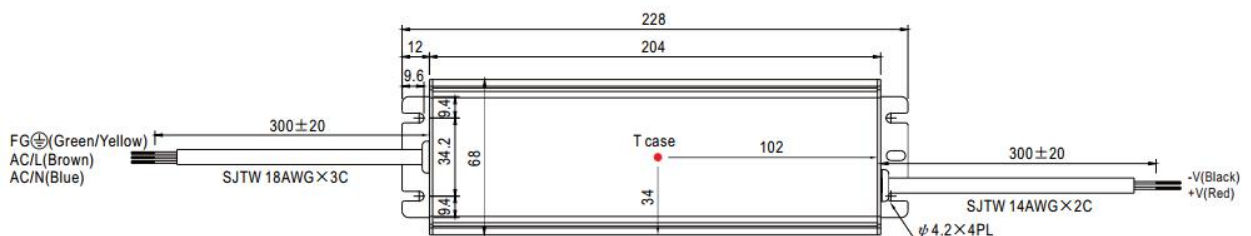
1. This is a DC light, meaning you should only power it directly using a DC source. You probably either have 12VDC or 24VDC. The light will auto detect the DC voltage. You don't have to do anything special if you operate on one of these voltages.
2. Connect:
  - a. Positive (our white wire) to Positive
  - b. Negative (our black wire) to Negative
  - c. Ground (our green wire) to either:
    - i. Ground wire if available from your source
    - ii. Chassis (metal structure)
    - iii. Leave it unconnected
3. All wire connection (including unconnected ground) **MUST BE** protected from water intrusion. Otherwise, damages due to water ingress because of unprotected wire connections will not be covered by our warranty.

*A Note on Cable Length:*

- If you operate at 12V, the current draw will be approximately 9A. The 6ft cable that comes out of the light (i.e. the pigtail) is AWG14 and if you also plan to use a AWG14, your total cable run **SHALL NOT** exceed 15ft.
- This is to minimize resistance, which can lower the voltage that goes into the light. If your light looks dim or if it flickers, the most likely cause is an insufficient cable gage or the cable run is too long.
- If you plan to do a longer cable run, we recommend you to first run the pigtail to a waterproof junction box close to the light, and from there, run a AWG10 to your DC power source (you may need to use 2 cables if the run is really long).

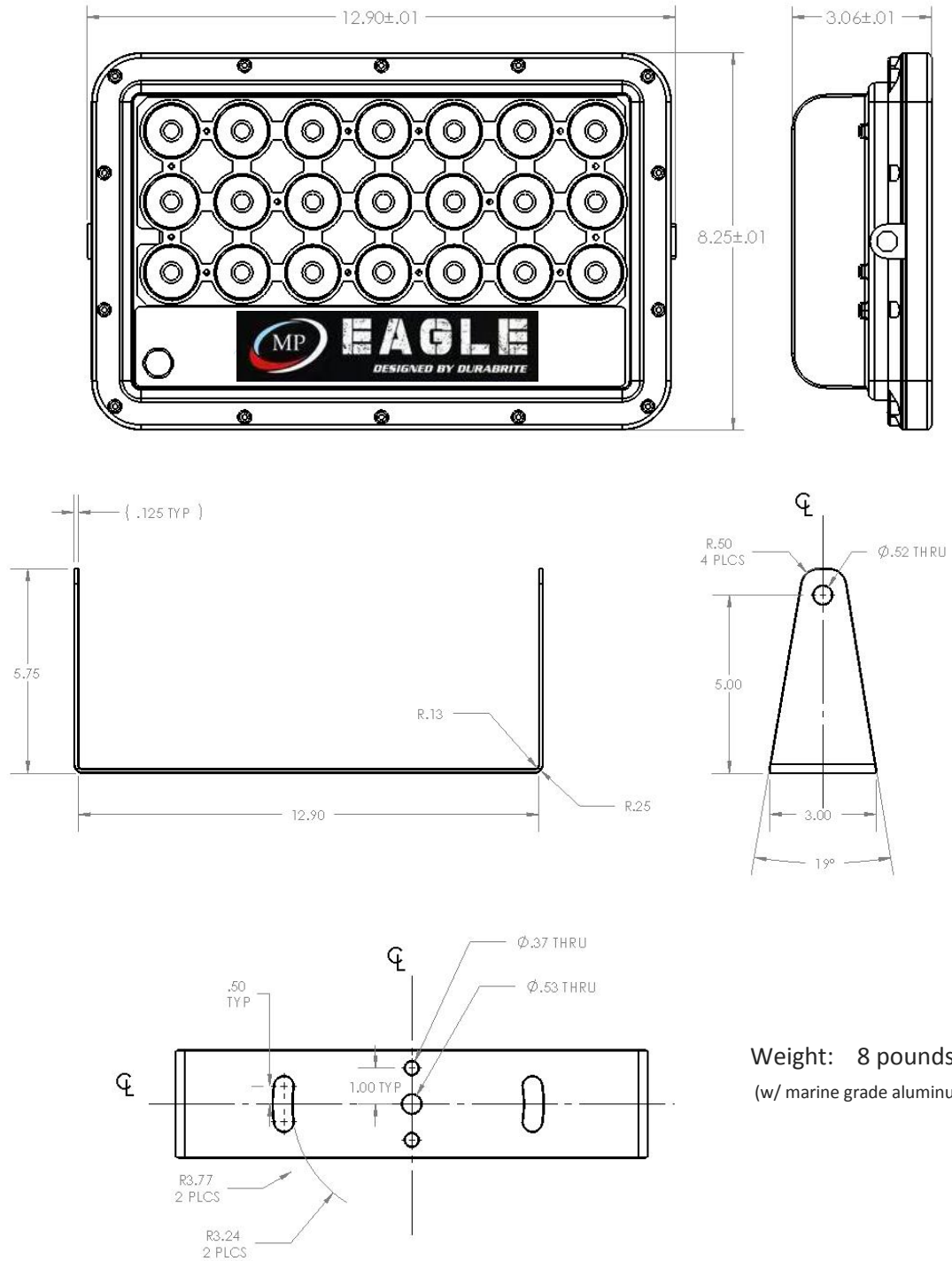
If you have an AC Power Source

1. STOP NOW !
2. Go to our website and buy the Mini AC Adapter before you start the installation.
3. Once the AC adapter arrives, connect:
  - a. Positive (our white wire) to Positive (Red wire on the Output side of the adapter)
  - b. Negative (our black wire) to Negative (Black wire on the Output side of the adapter)
4. Make connection on the Input side of the adapter according to the National Electrical Code or equivalent in your country. The adapter can be powered by either 110VAC and 220VAC.



MPS16500D1SX REV. -

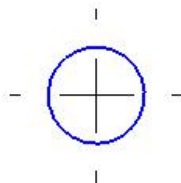
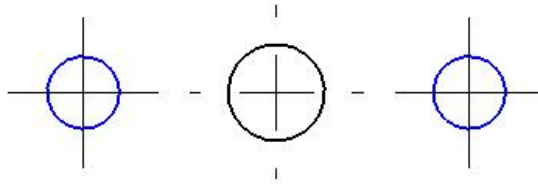
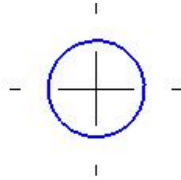
**Mechanical Dimensions & Weight:**



**Weight: 8 pounds**  
(w/ marine grade aluminum bracket)

**MOUNTING BRACKET HOLE TEMPLATE (TO SCALE)**

Note: Tighten bolts to 45 foot pounds after installation. Use spring washers to resist vibration.



## *Portables deployed in SE Asia with the US Air Force*

Our innovative engineers have answered the calls for portable, high-performance, low-draw LED lighting solutions. Weighing just under 20 lbs, our portable light merges the popular Mini attributes with the addition of four mounted legs, a military grade housing, and a secure bolted handle for convenient rugged portability.

- 16,670 raw lumens
- Smooth dimming technology
- Shock and vibration proof
- Ruggedized and lightweight
- IP65 waterjet resistant
- 8 hrs battery life\*
- Integrated battery meter
- Toggle switch for instant max optical output
- 5 year limited warranty



### Available Customized Options

- Highly resistant ceramic coated exterior
- Bulletproof front glass
- Strobing function
- Custom handle design
- Colored filters



\* At approx. 80% max optical output at 75F ambient. When used at max optical output continuously, it will maintain at its peak for more than 360min at 75F ! Note that battery life will vary widely with application ambient condition, charge and discharge conditions as well as number of cycles. A reduction in battery life should be expected. This natural degradation is not covered by the standard warranty terms. Please contact us to inquire about your battery replacement needs.





**Features:**

- Designed in USA
- Marine Grade Material
- Military Craft
- Seawater Corrosion Prevention
- Temperature Range:-40°C to 50°C
- Continous Working Time:7h
- Capacity:775W
- Battery Brand :LG
- Type Of battery :Lithium battery
- Water Resistance:IP65
- Vibration Resistance:ANSIC136.31



Size:13.25x13.8x6.8inch Weight:19 pounds(8.5KG)